

Town of Coupeville Coastal Adaptation Strategy Open House



September 11, 2024



CAS CONSULTANT TEAM



**Geomorphology,
Geospatial, & Coastal
Engineering**



**Public
Engagement**



**Civil
Engineering**

AGENDA

- Coastal Adaptation Strategy
Project Overview
- SLR Vulnerability
Assessment Findings
- Q&A
- Share your input!

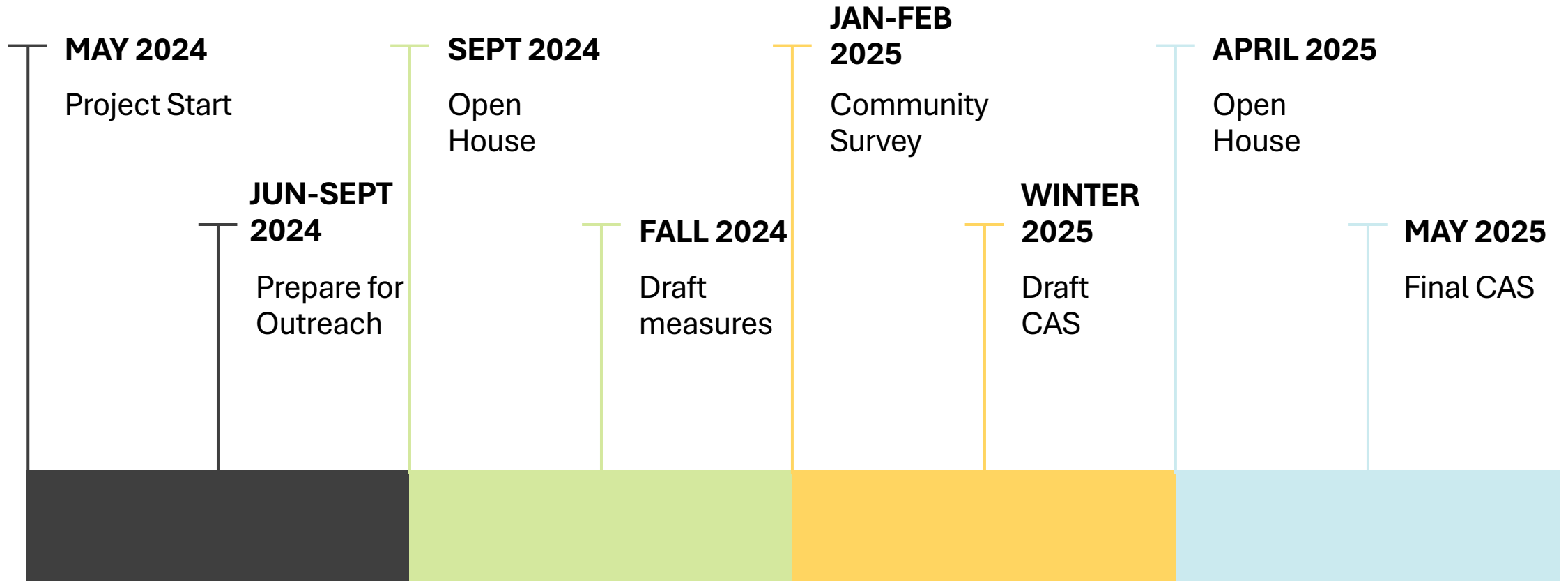


CAS PURPOSE

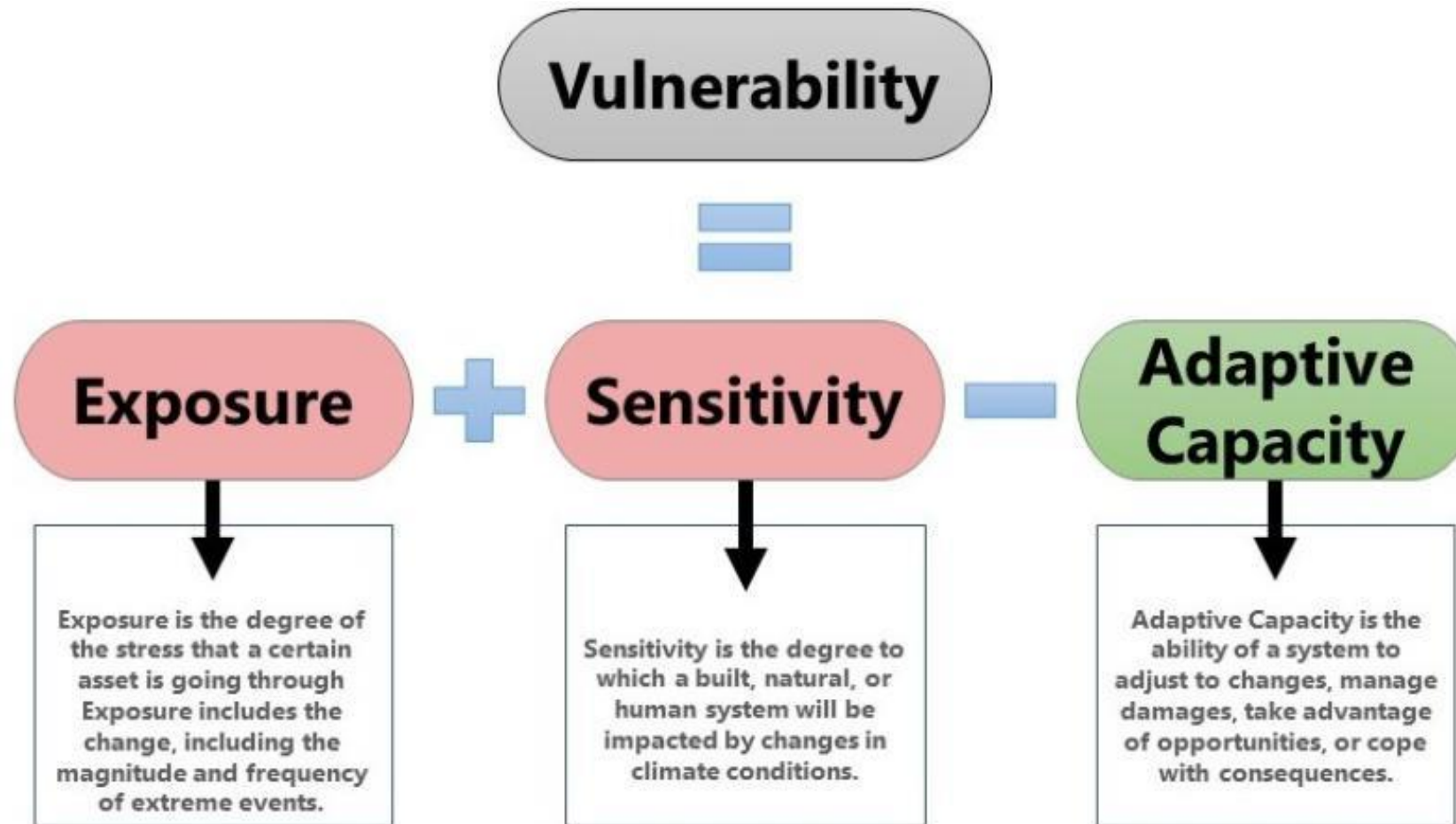
Set goals and identify priority actions to improve the resilience of the community to sea level rise and other coastal hazards.



SCHEDULE



2023 SEA LEVEL RISE (SLR) VULNERABILITY ASSESSMENT



SLR VULNERABILITY ASSESSMENT

Assets vulnerable to flooding and/or erosion:

- Waste Water Treatment Plant*
- Historic Overwater Buildings*
- Road Segments on Madrona Way*
- Wharf (Note: The Port is leading wharf efforts)
- Sewer lines
- Boat ramp
- Thomas Coupe Park
- Low-lying areas of the Parker Road neighborhood

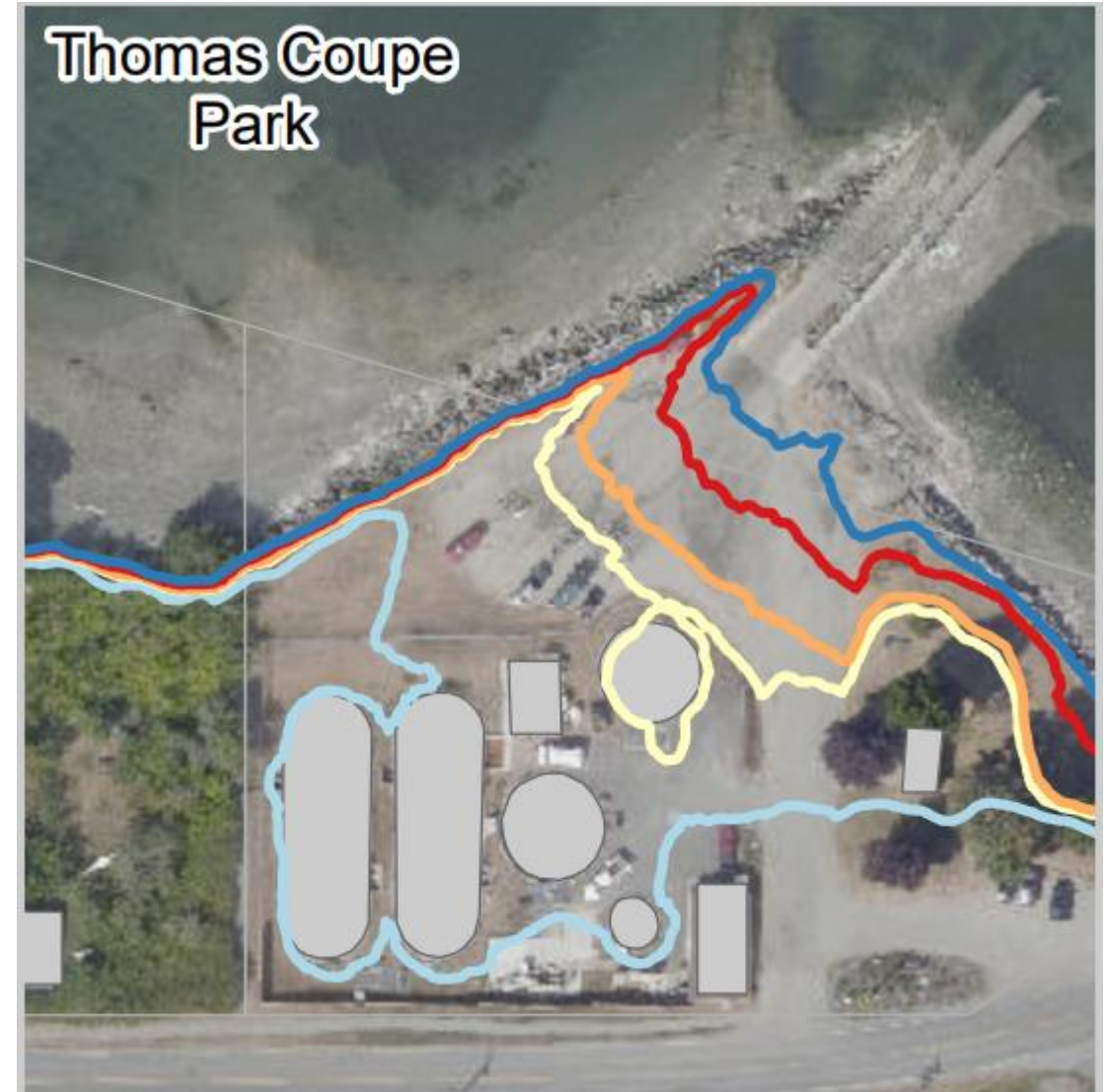
* Identified as most vulnerable assets



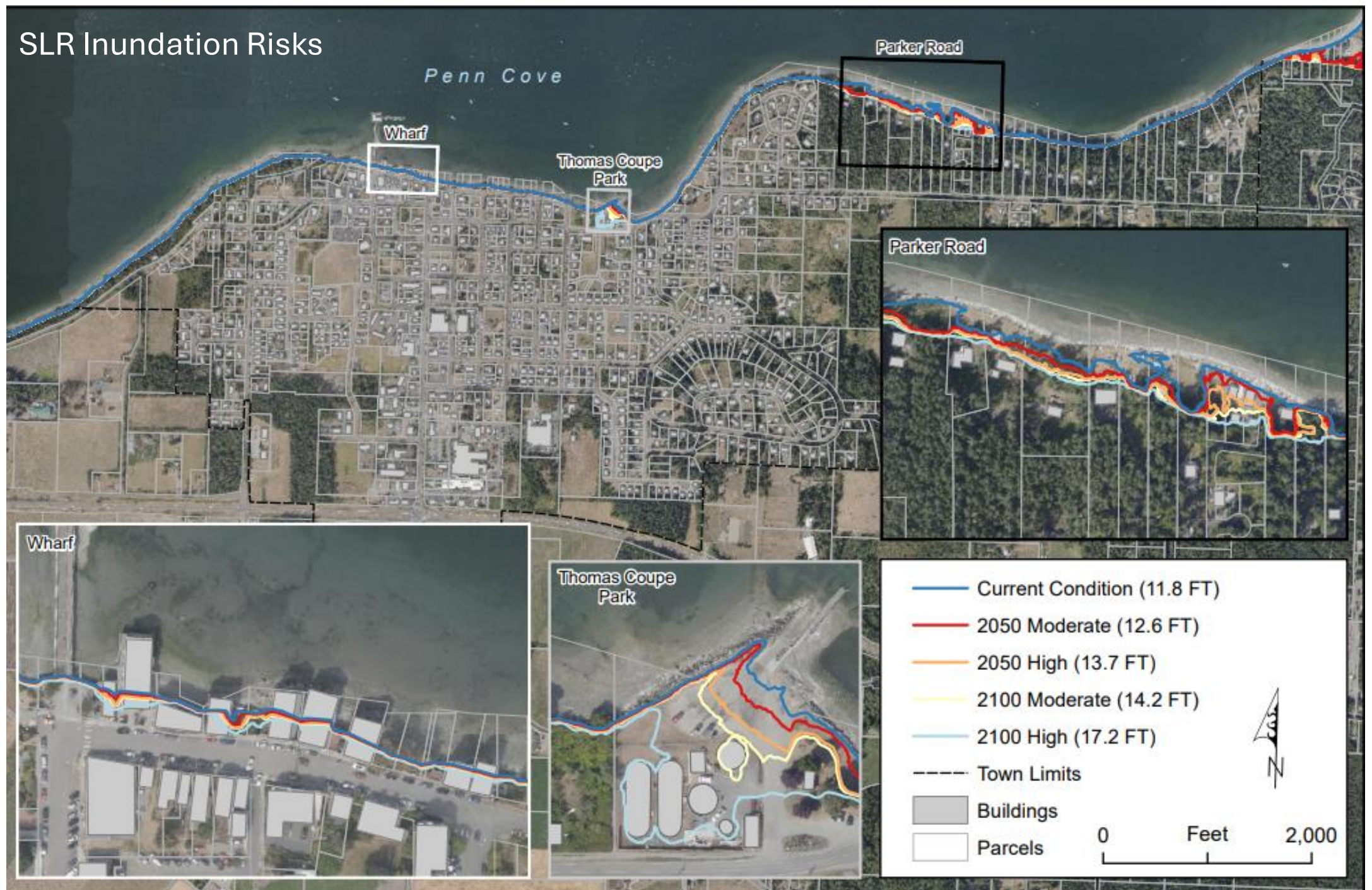
SLR SCENARIOS

- Current Condition (11.8 FT)
- 2050 Moderate (12.6 FT)
- 2050 High (13.7 FT)
- 2100 Moderate (14.2 FT)
- 2100 High (17.2 FT)

These SLR scenarios are occurring at MHHW **during a relatively large storm event** (2.7 FT of storm surge).



SLR Inundation Risks



Shoreline Recession Risks - Roads



Shoreline Recession Risks - Other

Lovejoy Point

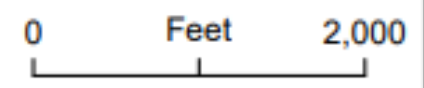
Penn Cove

NE Parker Road

Roads threatened by shore recession at:

- 2050 Moderate (12.6 FT)
- 2050 High (13.7 FT)
- 2100 Moderate (14.2 FT)
- 2100 High (17.2 FT)
- Recession Buffer
- Town Limits

- ### Road Type
- roads
 - paths/footways



Shoreline Recession Risks - Other

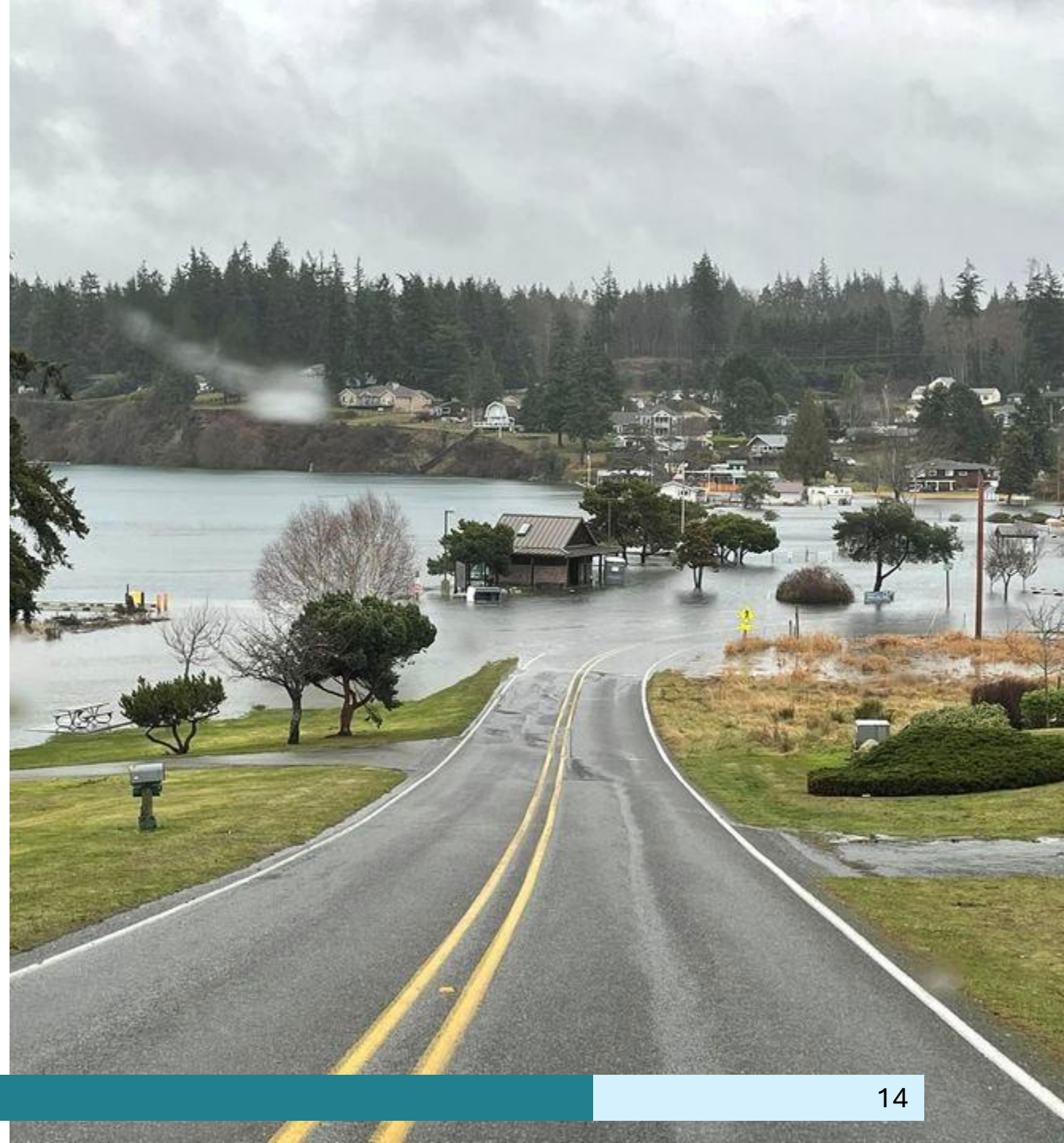


An aerial photograph of a coastal town, likely Coupeville, showing a mix of residential and commercial buildings, a sandy beach, and a marina with several boats. The image is partially obscured by a white gradient on the left side.

Questions?

CAS Outline

- Intro & Background
- **Goals & Guiding Principles**
- Potential Actions
- Action Evaluation
- Action Plans
- Possible Funding Sources
- Conclusions & Next Steps



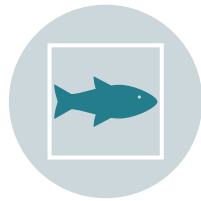
An aerial photograph of a coastal town. In the foreground, there is a sandy beach and a marina with several sailboats docked. The town consists of various residential and commercial buildings, some with parking lots. A long pier or breakwater extends into the water. The background shows more residential areas and a large open field, possibly a sports field.

Draft CAS Goals & Guiding Principles Activity

Draft CAS Goals



Reduce the vulnerability of the built environment to SLR



Monitor and maintain healthy coastal ecosystems



Minimize economic losses from SLR



Adapt in a way that minimizes harm to the environment and loss of public access

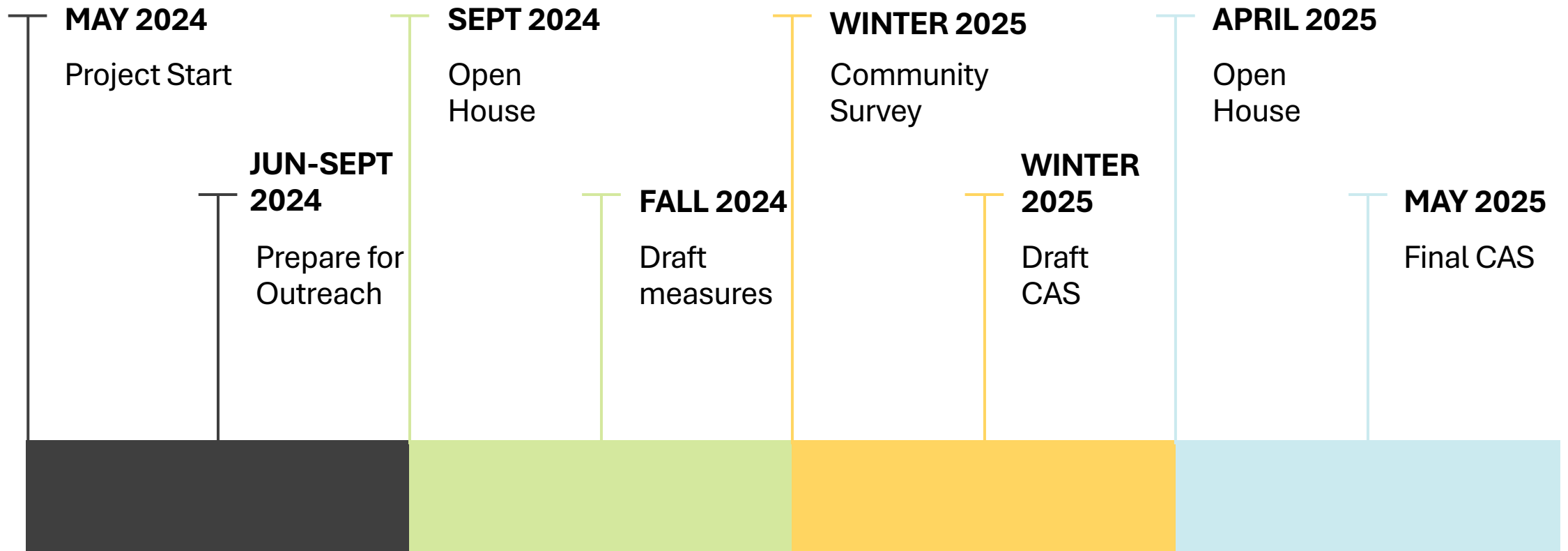


Protect critical infrastructure from SLR



Retrofit historic buildings to withstand SLR

SCHEDULE



An aerial photograph of a coastal town, likely Coupeville, Washington. The image shows a marina with several sailboats docked, a residential area with houses and streets, and a body of water. A teal-colored rectangular overlay is positioned across the middle of the image, containing the text "Thank you!".

Thank you!

Questions? Contact Joshua Engelbrecht, Community Planning Director

(360) 678-4461 ext.103

planner@townofcoupeville.org