



0 1/4 1/2 1 Miles

Properties annotated in red boxes are proposed to be rezoned as part of the approval of the Comprehensive Plan Update. See Draft (proposed) zoning map.

Limited development allowances in the Rural Reserve Planning Area are implemented by the underlying zoning

MOA → Medium

Medium → Civic

Civic → Parks

MOA/Commercial → Civic

Medium → High*

Split → Commercial*

Split → High*

MOA → High

Low → Medium

Medium → Civic

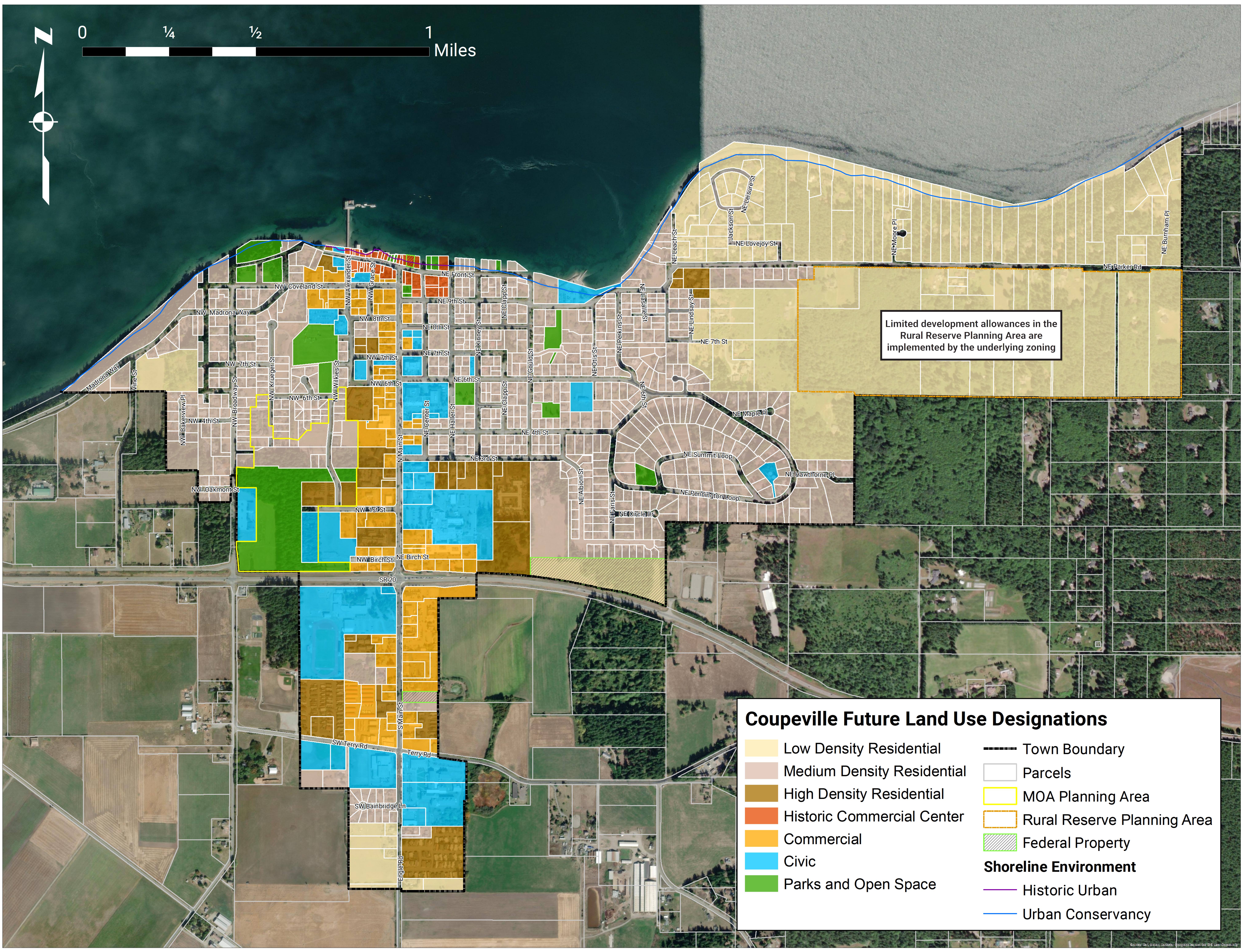
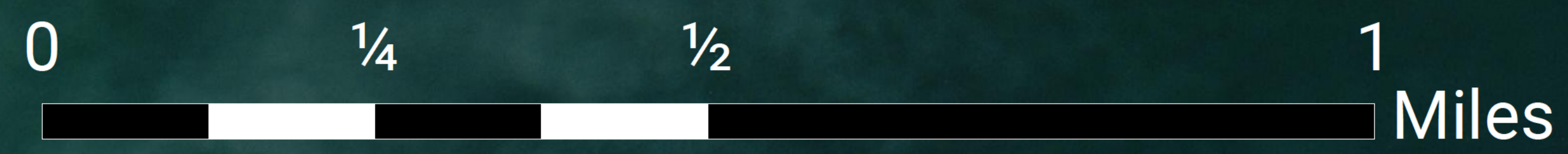
Medium → Commercial*

Split → High*

Low → Medium*

Coupeville Future Land Use Designations

- Low Density Residential
- Medium Density Residential
- High Density Residential
- Historic Commercial Center
- Commercial
- Civic
- Parks and Open Space
- Town Boundary
- Parcels
- MOA Planning Area
- Rural Reserve Planning Area
- Federal Property
- Shoreline Environment
- Historic Urban
- Urban Conservancy



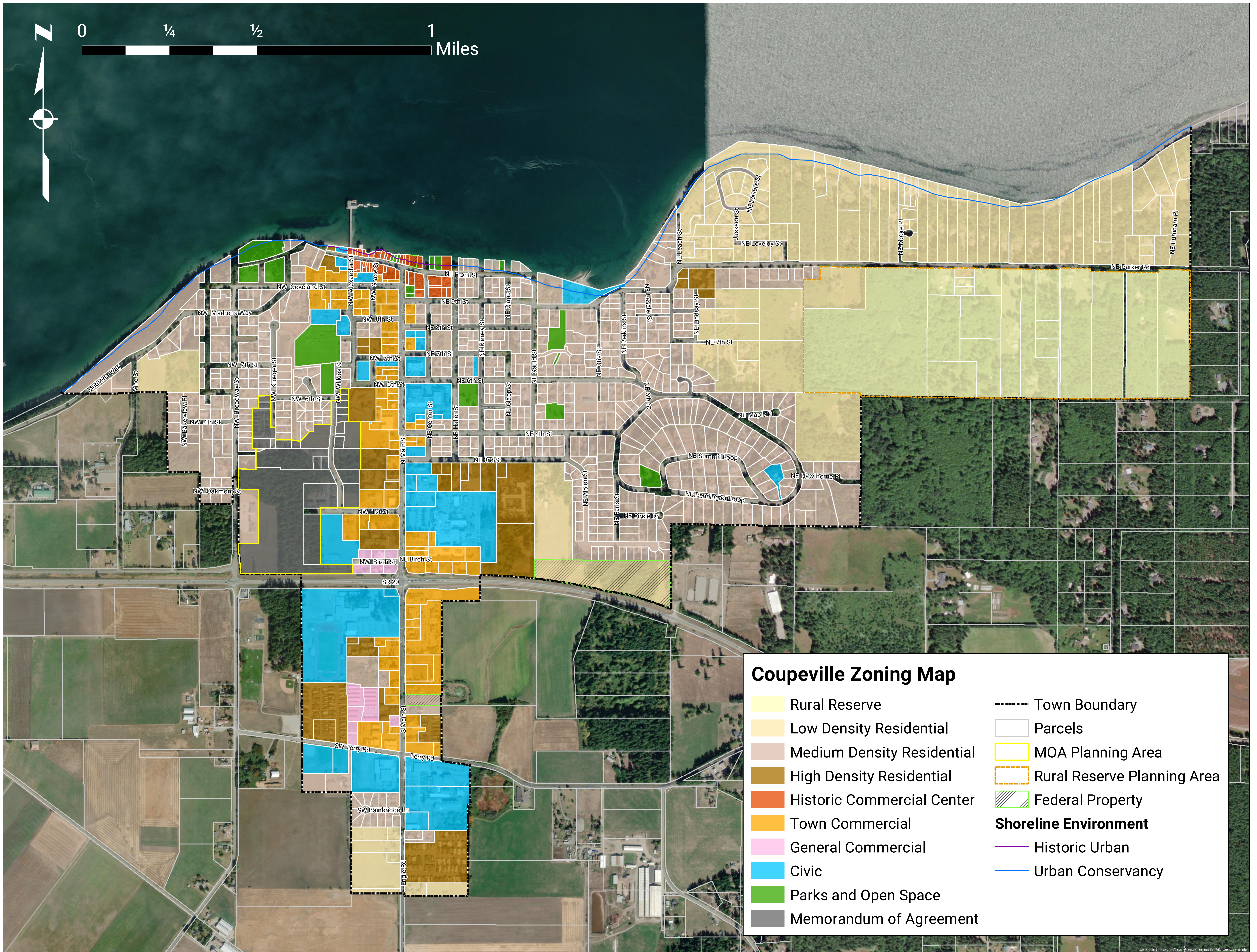
Limited development allowances in the Rural Reserve Planning Area are implemented by the underlying zoning

Coupeville Future Land Use Designations

Low Density Residential	Town Boundary
Medium Density Residential	Parcels
High Density Residential	MOA Planning Area
Historic Commercial Center	Rural Reserve Planning Area
Commercial	Federal Property
Civic	Shoreline Environment
Parks and Open Space	Historic Urban
	Urban Conservancy



0 1/4 1/2 1 Miles



Coupeville Zoning Map

Rural Reserve	Town Boundary
Low Density Residential	Parcels
Medium Density Residential	MOA Planning Area
High Density Residential	Rural Reserve Planning Area
Historic Commercial Center	Federal Property
Town Commercial	Shoreline Environment
General Commercial	Historic Urban
Civic	Urban Conservancy
Parks and Open Space	
Memorandum of Agreement	